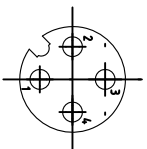
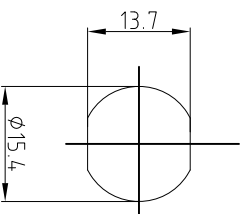


FEMALE END VIEW

SUGGESTED PANEL CUT OUT

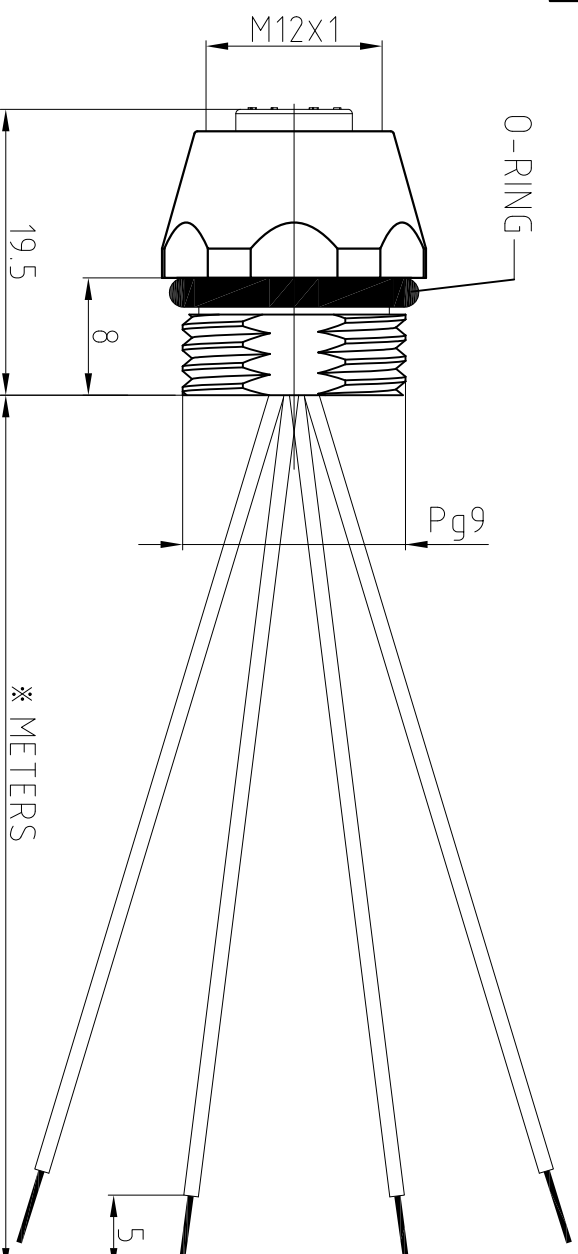
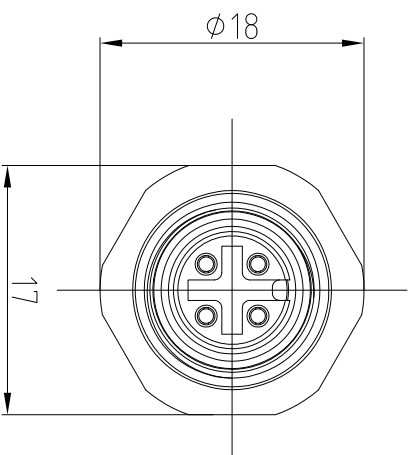


1=BN
2=WH
3=BU
4=BK

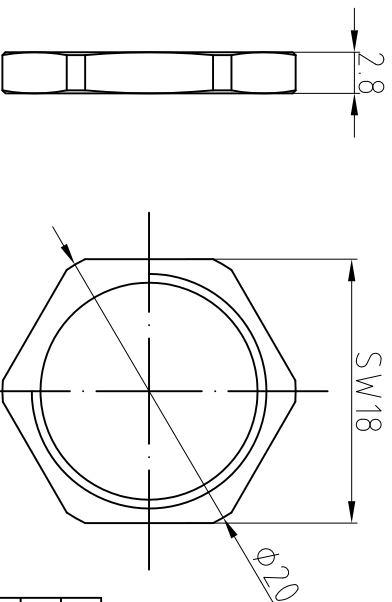


SPECIFICATIONS

CONTACT CARRIER MATERIAL/COLOR	TPU/BLACK
CONTACT/PLATING	BRASS/GOLD
HOUSING MATERIAL/PLATING	BRASS/NICKEL
O-RING MATERIAL	FKM/NBR
OPERATING CURRENT	4 A
OPERATING VOLTAGE	250 V
CONDUCTOR INSULATION MATERIAL	PVC
NUMBER OF CONDUCTORS (AWG)	4 x 22 AWG
OPERATING TEMPERATURE	-20°C — +85°C
PROTECTION CLASS	IEC IP67



※ METERS



CABLE LENGTH	TOLERANCE
ALL LENGTHS	±4%(OR 50mm) OF LENGTH -0%(OR 0mm) OF LENGTH WHICHEVER IS GREATER
STRIP LENGTH	TOLERANCE
0 - 7mm	± 1.0mm
8 - 29mm	± 1.5mm
30 - 49mm	± 2.0mm
50 - 69mm	± 3.0mm
70 - 100mm	± 4.0mm
over 100mm	± 5.0mm

UNIT OF MEASUREMENT
MILLIMETER

Tianjin Geneuo Technology Co., Ltd
GSEE TECH

Approved: Date: 2018.4.27

Process YJF Date: 2018.5.24 Scale: 1:1

Description: FEK421-※

Checked Y Date: 2018.5.3
Designed LXH Date: 2018.4.27



3RD Angle
Projection

www.gsee-tech.cn
www.gsee-tech.com

REV
A

REV	COUNT	DESCRIPTION OF REVISIONS	BY	CHECKED	DATE